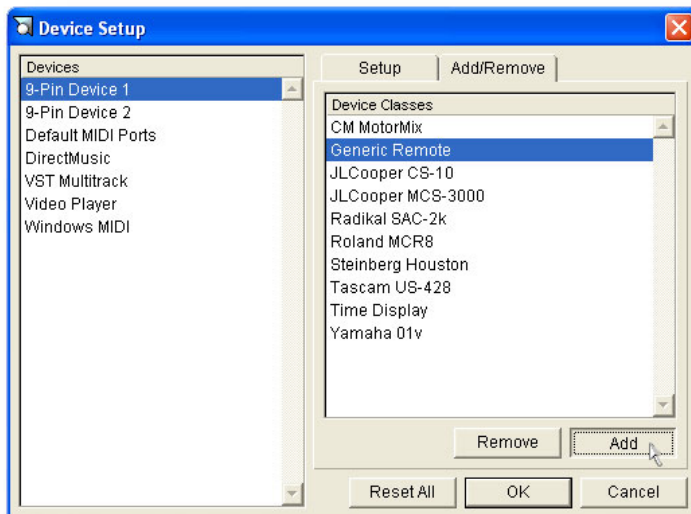
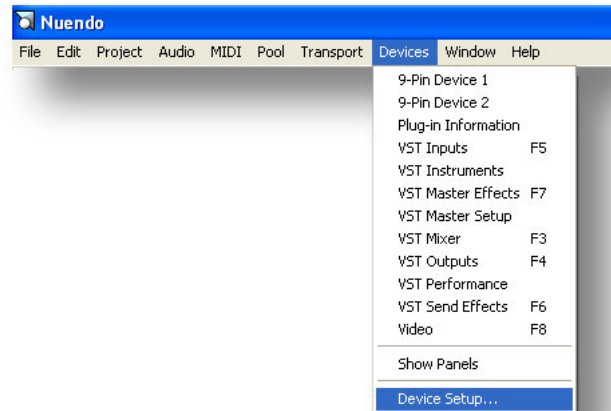


Installing the CS-32 Mini^{DESK} in Nuendo

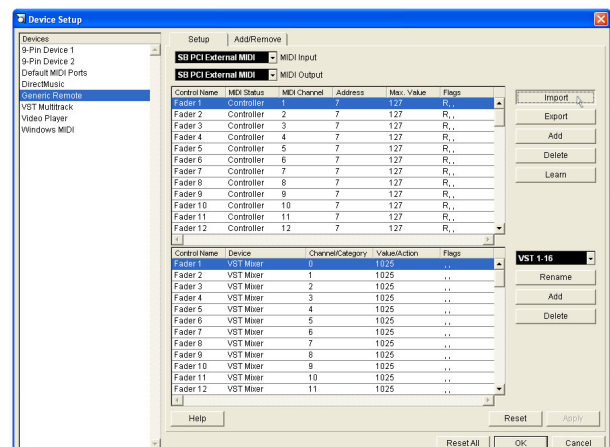
1. Connect the CS-32 MiniDESK to an open MIDI port.
2. Launch Nuendo.
3. In the Menu, select Devices | Device Setup...

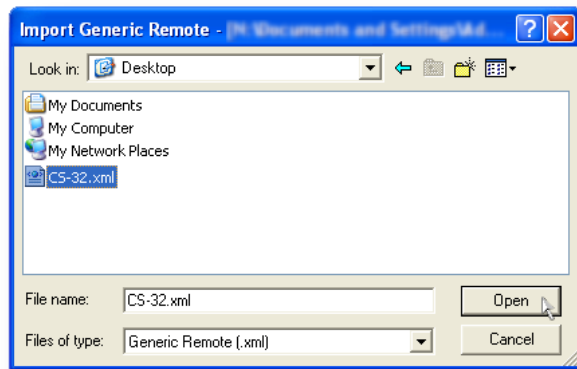


4. If Generic Remote does not appear in the devices list, add it from the Device Classes.

Note: Do not add a Generic Remote device if there is already one installed. Nuendo will be unstable if more than one Generic Device appears in the Devices list.

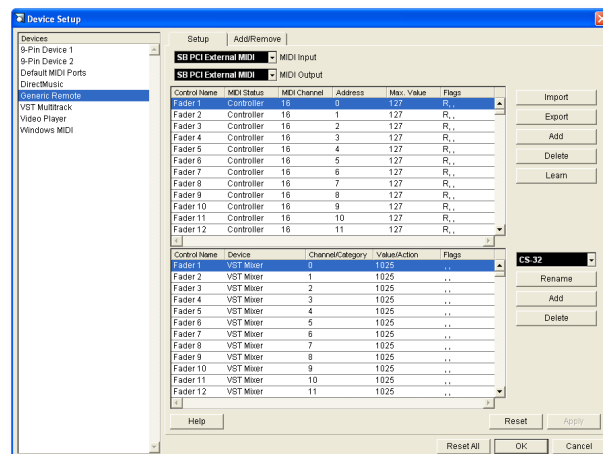
5. Click on the Setup tab.
6. Click on the Import button.





7. Locate the CS-32.xml file and click on Open.

8. Change the MIDI Input and MIDI Output to match port where your CS-32 is plugged in. For USB select “*JLCooper Serial to MIDF*”.



9. Your CS-32 MiniDESK is now ready to use in Nuendo. You can customize the mapping of the CS-32 controls in the lower window.